

Date/Time Vert at 13:40:46 January 18, 2021
Trigger Source Geo: 0.500 mm/s
Range Geo: 254.0 mm/s
Record Time 3.0 sec at 2048 sps
Operator/Setup: Operator/Test.MMB

Serial Number UM16987 V 10-89 Micromate ISEE
Battery Level 3.8 Volts
Unit Calibration October 21, 2020 by UES New Delhi
File Name __TEMP.EVT

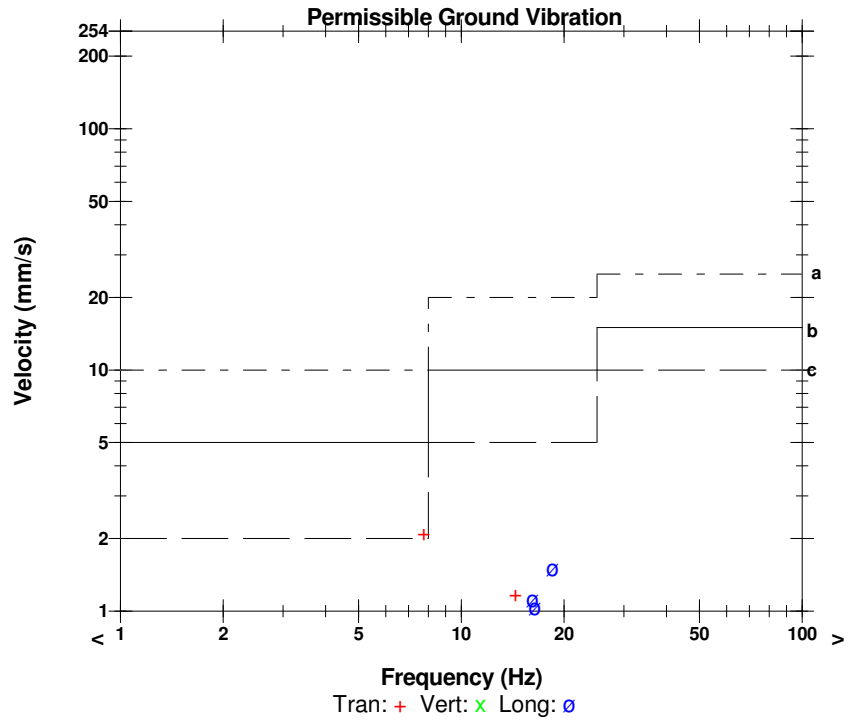
Notes

Location:
 Client: MCL
 User Name:
 General:

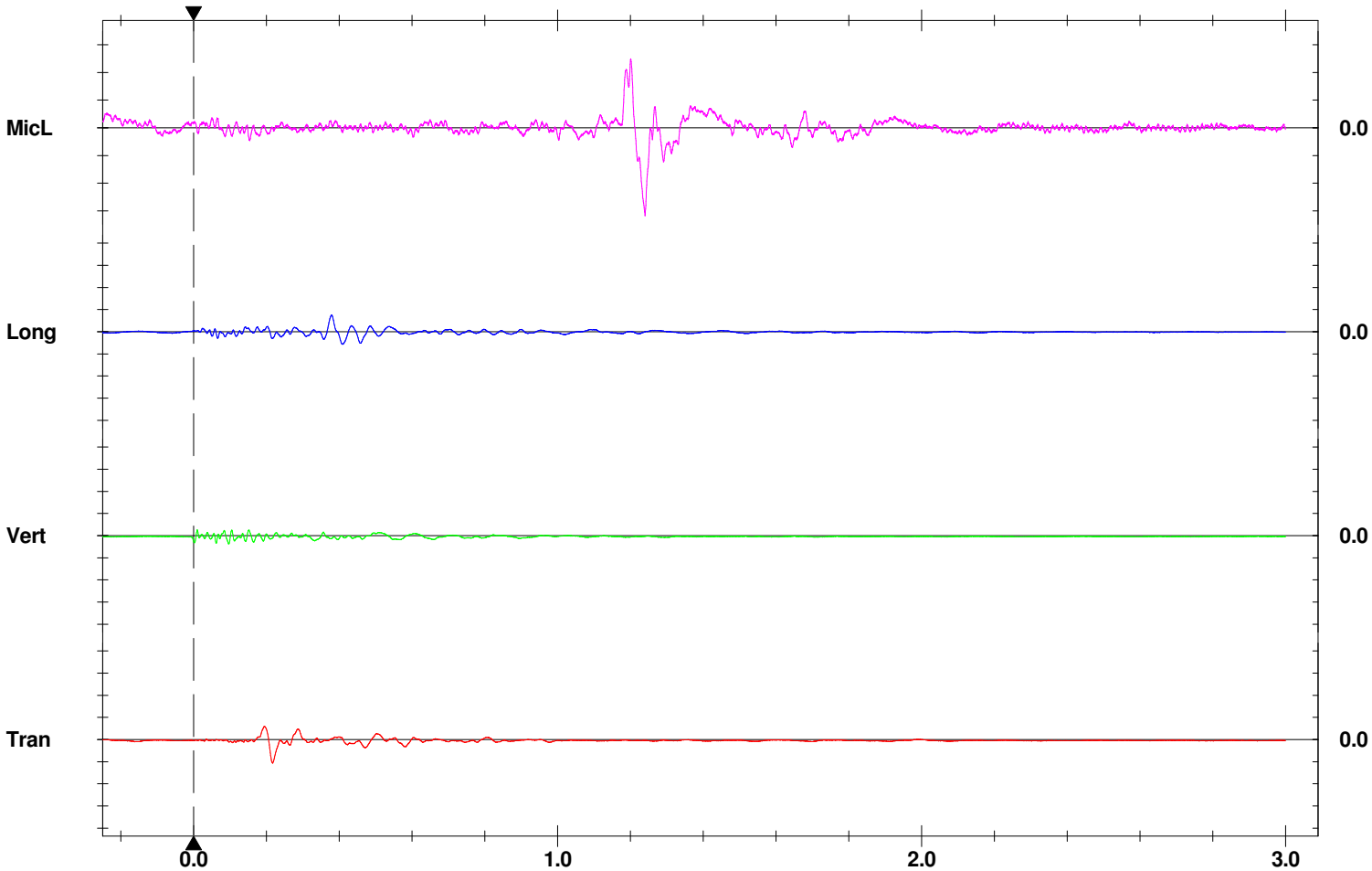
Microphone Linear Weighting
PSPL 104.0 dB(L) 3.181 pa.(L) at 1.240 sec
ZC Freq 11.9 Hz
Channel Test Passed (Freq = 19.7 Hz Amp = 1230 mv)

	Tran	Vert	Long	
PPV	2.136	0.749	1.505	mm/s
ZC Freq	7.8	39	18.6	Hz
Time (Rel. to Trig)	0.217	0.096	0.378	sec
Peak Acceleration	0.030	0.030	0.020	g
Peak Displacement	0.030	0.013	0.011	mm
Sensor Check	Passed	Passed	Passed	
Peak Vector Sum	2.223 mm/s at 0.217 sec			

DGMS India (A)



- a) Industrial Buildings
- b) Domestic houses/structures
- c) Historic objects, sensitive structures



Time Scale: 0.20 sec/div **Amplitude Scale:** Geo: 2.000 mm/s/div Mic: 1.000 pa.(L)/div
Trigger =